

Panasonic

**THE FUTURE
IS SMART.**



UniLink

KV-S4085C / KV-S4065C COLOR DOCUMENT SCANNERS

For More Information: www.UniLinkinc.com 800.666.2980 Sales@UniLinkinc.com

Accurate Feeding for Various Paper Types

Have you ever had your work interrupted by a scanner jam, and then found out that important documents were damaged? Or after you've finished scanning, have you discovered that one or more pages were missed? Our innovative scanner uses a reliable, industry-first paper feed mechanism to quickly detect stapled documents and halt scanning to minimize damage to the optical glass and the document. It also senses double-sheet feeding to prevent misfeedings. This minimizes errors and problems in large scanning runs. Plus, it features full-color scanning (200 or 300 dpi) at up to 200 ipm* with clear, high-resolution results. In short, it gives you both efficiency and quality.

*When using the KV-S4085CW Letter, Landscape, 200/300 dpi, Binary/Color.



High-Reliability Scanning

Accurately Feeds Various Size of Documents

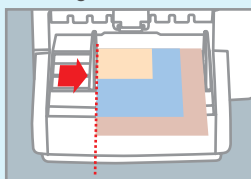
MIXED DOCUMENT FEEDING*¹

Documents with different sizes and thicknesses can all be fed together. They can be set in center, left, or right alignment. By using left or right single-side alignment, there is no more need to spend time organizing documents according to their size, so scanning is fast and easy. This function greatly increases work efficiency.

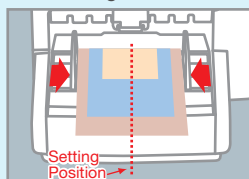
¹ Effective wide scanning of KV-S4065CL is Letter size from center position.



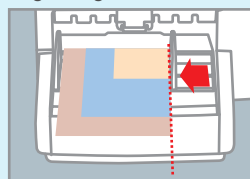
Left alignment



Center alignment



Right alignment



The scanner feeds accurately, regardless of alignment.

High-Speed Scanning of Sheets up to 100 feet Long

LONG PAPER MODE

The highly reliable paper feed mechanism quickly and reliably scans long documents too. Using the straight path, this boosts work efficiency by smoothly scanning long monitoring sheets, like those used for EKG documents, and thick documents.

curved path
straight path



Two path types enable long-sheet scanning.

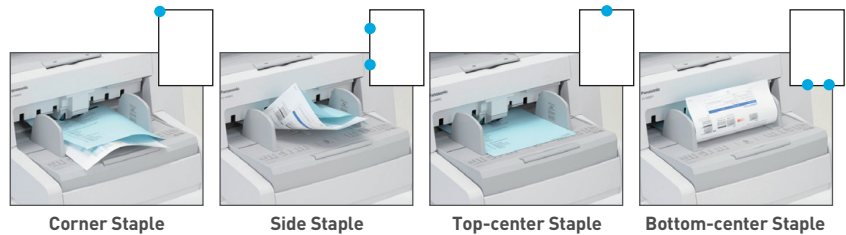


Innovative Paper Feed Mechanism

Panasonic

Preventing Damage to the Scanning Glass STAPLED DOCUMENT DETECTION

Multiple sensors are used to detect various types of stapled documents, and to immediately stop the scanner when stapling is detected. This minimizes damage to both the document and the optical glass.

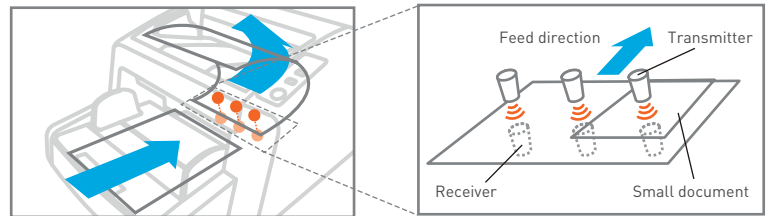


Staples are quickly detected in any location, to minimize damage to the optical glass and the document.

Accurate Scanning ULTRASONIC DOUBLE-FEED DETECTION

Ultrasonic sensors detect double feeds. The KV-S4085CW is equipped with three ultrasonic sensors to cover a larger area of the document, rather than the center only, for versatile detection of small documents mixed among regular-sized documents.

*KV-S4065CW/KV-S4065CL have one sensor.



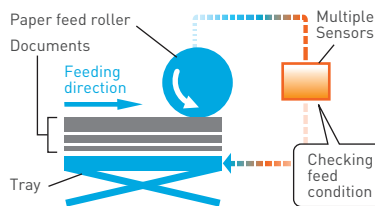
Three sensors* detect double feeding and stop the scanner immediately.

High-performance sensors catch even subtle changes.

Smooth Feeding INTELLIGENT FEED CONTROL

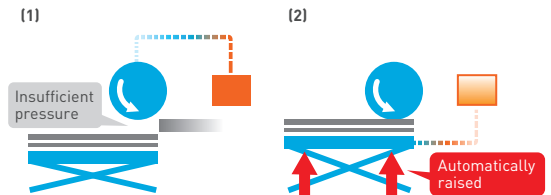
Multiple sensors check the paper feed condition and automatically adjust the roller pressure to ensure that documents of various thicknesses are accurately fed. This makes it more reliable and accurate than conventional feed mechanism.

CHECKING



Multiple sensors constantly check the condition of the paper feed and the pressure between the document and the roller.

ADJUSTING



The sensors detect when the paper feed is not correct due to insufficient pressure.

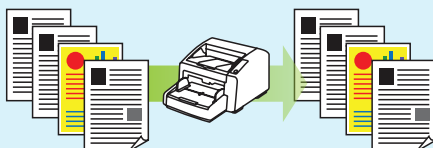
The tray is raised to adjust the pressure and accurately feed the document.

High-Quality Image Processing

No More Need to Pre-Sort

AUTOMATIC BINARY/COLOR DISTINCTION

This function automatically detects when a set of documents contains some color sheets and some monochrome (B/W) sheets. You can feed these together without sorting, and the machine will automatically compress the data efficiently according to whether a sheet is color or monochrome (B/W), so the electronic file size is minimized. This is a feature typically found only on high-end scanners.



Documents

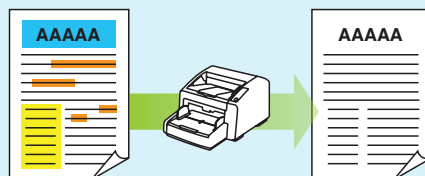
Image data

The scanner detects color or B&W.

Pre-Printed Form Scanning

MULTI COLOR DROPOUT

With Multi Color Dropout, you're no longer limited to removing only reds, greens and blues from pre-printed forms. Any color or color range can be selected for removal for more accurate OCR processing. And you're not limited to only one color — you can select up to three or even drop all colors saving only black.



Documents

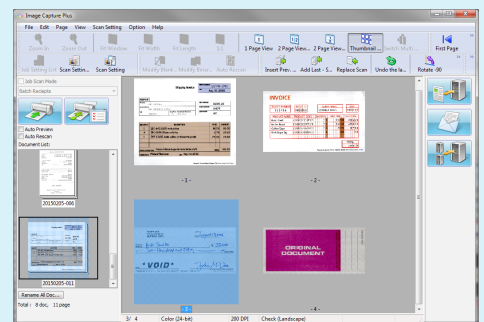
Image data

The scanner makes it easier to read text data.

Eliminates Post-Processing

AUTOMATIC CROP AND DE-SKEW

When you scan documents of mixed size, the documents are automatically cropped and stored in the appropriate size. Also, skewed documents are automatically straightened when they are scanned.



The scanner crops white space.

			KV-S4085CW	KV-S4065CW/KV-S4065CL
Scanning Face			Duplex	
Scanning Method			Contact-type Color Image Sensor Selectable black and white background reference	
Scanning Speed*1 Letter size 200/300 dpi	Binary	Simplex	Up to 85 ppm (Portrait) Up to 100 ppm (Landscape)	Up to 65 ppm (Portrait) Up to 80 ppm (Landscape)
		Duplex	Up to 170 ipm (Portrait) Up to 200 ipm (Landscape)	Up to 130 ipm (Portrait) Up to 160 ipm (Landscape)
	Color	Simplex	Up to 85 ppm (Portrait) Up to 100 ppm (Landscape)	Up to 65 ppm (Portrait) Up to 80 ppm (Landscape)
		Duplex	Up to 170 ipm (Portrait) Up to 200 ipm (Landscape)	Up to 130 ipm (Portrait) Up to 160 ipm (Landscape)
Resolution			600 dpi Optical Resolution 100 - 600 dpi (1 dpi step)	
Detection			Double feed detection (KV-S4085CW: 3 positions, KV-S4065CW/KV-S4065CL: 1 position), Stapled document detection	
Compression			JPEG (color, grayscale)	
Image Output			Binary, Grayscale (8 bit), Color, MultiStream™ output	
Binary Mode Halftone			Dither, Error diffusion	
Image Control <i>Executed by driver software or Panasonic ICP™</i>			Dynamic Threshold, Automatic De-skewing, Automatic Crop, Automatic Binary/ Color Distinction, Blank Page Removal, Double Exposure, Multi Color Dropout, Smooth Background, Hole Removal, Border Removal, Noise Reduction, Detect File Separation Sheet and much more	
Other Functions			Length control, Barcode detection, Patch code detection, Automatic separation, Control sheet, Long paper mode	
Long Paper Mode			100 feet (30,480 mm) (crop pages to maximum 100 in. (2,540 mm) per page)	
Scanning Size			KV-S4065CL: 8.9 in. x 100 in. (227 mm x 2,540 mm) KV-S4065CW / KV-S4085CW: 11.9 in. x 100 in. (302 mm x 2,540 mm)	
Documents*2	Size (ADF)	Minimum	1.9 in. x 2.75 in. (48 mm x 70 mm) In manual feed or thick paper modes: 1.9 in. x 3.9 in. (48 mm x 100 mm)	
		Maximum	11.7 in. × 17 in. (297 mm × 432 mm)	
	Weight	Thin mode: 5 - 13 lbs. (20 - 50 g/m²) Normal mode: 13 - 42 lbs. (50 - 157 g/m²) Thick mode: 42 - 56 lbs. (157 - 209 g/m²) Auto mode: 5 - 42 lbs. (20 - 157 g/m²)		
		Thickness	1.9 - 7.9 mils (0.04 - 0.2 mm) Straight path: max. 23.6 mils (0.6 mm) Note: 1 mil = 0.001 in.	
Hopper Capacity			Up to 300 sheets (17 lbs., 64 g/m²)	
Interface			USB 2.0	
Power Requirement			AC 100 - 240 V, 50/60 Hz	
Power Consumption	Maximum (Scanning)		1.5 A	1.4 A
	Minimum (Standby)		0.7 A	0.7 A
	Sleep mode		4 W or less	4 W or less
Operating Environment	Temperature		59°F - 86°F (15°C - 30°C)	
	Humidity		20 - 80 % RH	
Storage Environment	Temperature		32°F - 104°F (0°C - 40°C)	
	Humidity		10 - 80 % RH	
External Dimensions*3 (W x D x H)			18.7 in. x 23.0 in. x 13.0 in. (474 mm x 585 mm x 329 mm)	
Weight*3			55 lbs. (25 kg)	
Accessories			CD-ROM: Operation manual, Installation manual, ICP™ manual, PIE manual, User Utility manual, Control data sheet, ICP™ capture software, ISIS®/ TWAIN driver software, User utility software, Multi color dropout utility Power cord, USB cable & Blower Brush	
Options	Roller exchange kit		KV-SS033	
	Roller cleaning paper		KV-SS03	
	Imprinter unit (Pre and/or Post)		KV-SS014	
	Ink cartridge		KV-SS021	

*1: The scanning speed differs depending on the host computer, operating system, application, image data amount, and paper type.

*2: "Weight in pounds" of paper represents the weight of 500 sheets (17 in. x 22 in. / 432 mm x 559 mm).

*3: Dimensions and weights are approximate.

ToughFeed | IMAGE Capture | Plus
IMAGE CAPTURE PLUS



As an ENERGY STAR® Partner,
Panasonic has determined that this product meets
the ENERGY STAR guidelines for energy efficiency.

Easy Maintenance

The clamshell design allows full, easy access to the entire paper path, so you can clear paper jams or clean the unit without calling a service technician. The rollers are also easy to replace, improving the unit's cost-effectiveness, and have a long service life.



Rollers are easy to replace.



The clamshell opens widely.

For More Information:

www.UniLinkinc.com

800.666.2980

Sales@UniLinkinc.com

UniLink